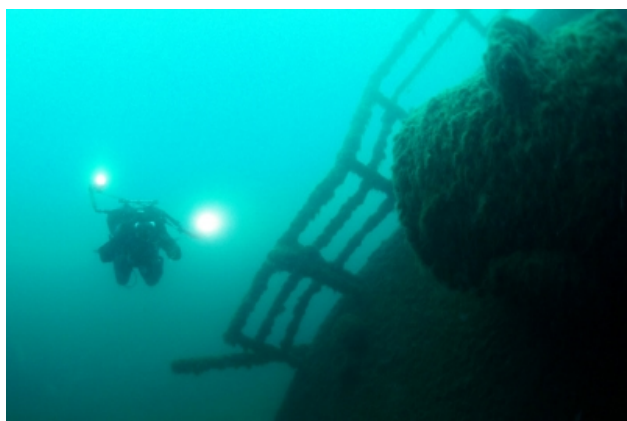


Lake Michigan Milwaukee Wreck Trip Sept. 28 & 29, 2024

We think we've formulated the perfect Milwaukee Wreck trip recipe! We've chartered the Great Lakes Diving Center to host our weekend dives and we'll be staying at the Harborview in Port Washington, Wisconsin. With four scheduled dives, we're hoping to get the most out of our wreck diving adventure. Join Y-kiki Divers as we head to Lake Michigan!



The Plan:

We can meet at Y-kiki Chesterfield on Friday, Sept. 27 and carpool up. It will take us approx. 6.5 hours to get to the hotel.

We'll be staying at the Harborview which is located along the shores of Lake Michigan in Port Washington's award-winning downtown district. Rooms feature flat screen TV, coffee maker and mini-fridge.

There are numerous wrecks within the recreational dive depths near Milwaukee.

Our exact dives will be vary on our divers' interest AND weather conditions. While divers can dive the Great Lakes in a wetsuit, water temps range in the 38-42 degree range and we highly recommend a drysuit for comfort. In addition, some of the possible wreck sites are deeper... below 100ft. We'll be staying above the recreational dive limits for this trip, but we recommend Advanced Open Water as the minimum certification.

Conditions in Sept. are air temps in the 80s, surface water temps in the upper 60s and water at depth 38-42 degrees. Weather is usually good in the summer, but it is not inconceivable to encounter 4-6 foot swells and, occasionally, the charter will cancel diving due to conditions. Motion sickness is a real possibility. Plan accordingly. Of course a drysuit is strongly recommended.

Trip includes:

- 2-tank morning boat dives Saturday & Sunday with Great Lakes Diving Center
- Y-kiki Instructor, Konstantin Chartkov, will be leading

Book Your Room:

The Harborview, 135 East Grand Ave., Port Washington, WI
(262) 284-9461 / www.theharborview.com

Cost:

Cost is \$520 per person. All deposits and payments are nonrefundable unless we can fill your space. Deposit at booking is \$320pp. And balance due Sept. 6, 2024.

Trip does not include:

- Transportation
- Accommodations
- Meals
- Air fills
- Crew gratuities



13477 Olive Blvd., St. Louis, MO 63017 / (314) 469-8722
9922 Kennerly Road, St. Louis, MO 63128 / (314) 843-0354
www.y-kiki.com / info@y-kiki.com

